

# SAILING Champions League

## Sailing Instructions

SAILING Champions League, Copenhagen

Stand:



16.06.2014

1	General	<ul style="list-style-type: none"><li>▪ Date: Friday to Sunday, 17. – 19. October 2014 in Copenhagen</li><li>▪ Organizer: Deutsche Segel-Bundesliga &amp; Dansk Sejlsportsleagen</li><li>▪ Location/Estuary: Copenhagen, Amaliehaven, in front of the opera house</li><li>▪ Principle Race officer: n.n.</li><li>▪ Umpire chairmen: n.n.</li><li>▪ Regatta format: Fleet Race</li></ul>
2	Rules	
	2.1	The regatta will be governed by the rules as defined in “The Racing Rules of Sailing”, with the exception of class rules.
	2.2	The rules concerning the handling of the boats, as described in Appendix B to these sailing instructions, are applicable.
3	Notes to Competitors	Notes to competitors will be posted on the official notice board located on the west side of the clubhouse, at the entrance.
4	Changes to Sailing Instructions	Any change to the sailing instructions will be posted no later than 90 minutes before the preparatory signal to the race from which on they will take effect.
5	Signals ashore	
	5.1	Signals made ashore will be displayed on the flagpole (position tbd).
	5.2	When flag signal AP is displayed ashore, the next warning signal will be made at the earliest 20 min before removal of AP ashore. This changes the race signal AP
	5.3	When flag signal Y is displayed ashore, rule 40 applies at all times while afloat. This changes the Part 4 preamble.

	5.4	When flag signal W is displayed on the starting boat, no gennaker will be used when sailing.

6	Time schedule
6.1	The race office will have the following opening hours: Thursday (16.10.): tbd Friday (17.10.) tbd Saturday (18.10.): tbd Sunday (19.10.): tbd
6.2	Training opportunities On Friday, 16.05.2014 from 09:30am to 12:30pm, all competitors will have the opportunity to practice on the regatta boats. This training time block will be divided into 4 parts of 45 minutes each, during which 6 competitors' teams will be able to practice. The training times will be allocated to the competitors in advance, on-site after registration at the check-in. The race committee may shorten or postpone training schedules, e.g. due to weather conditions. If this is the case, the order of training times will remain the same. Changes will be announced on-site.
6.3	The drawing of groups and boats will be drawn by lot on the first regatta day, at 9am. Order and number of races will result from the pairing list. The pairing list will be published before the drawing. It may be changed if teams fail to compete or if boats give out. If race committee or repair service is unable to clear a boat within a reasonable time, the race committee may start the race without this boat. The team associated with this boat will then be considered as not allocated to this race.
6.4	First skippers meeting on 17.10.2014, 1pm on (place tbd). Further skippers meeting see notification.
6.5	First warning signal is on Friday, 17.10.2014 at 2pm.
6.6	The following races are carried out directly afterwards, with change of boat and crew according to the pairing list, on the water or at the changing area onshore.
6.7	The time of the first warning signal on the second and third racing day will be announced on the notification board by the race committee on the previous day, after the races have finished.
6.8	Latest possibility for a warning signal is on 19.10.2014 at 3pm.
7	Class Flag J70: Flag of Federal League, white with German Federal Sailing League (DSBL) logo
8	Racing Area tbd
9	Course Appendix A shows the course, including the order in which marks are to be passed, and the side on which each mark is to be left.

--	--

10	Course Marks
	10.1 Course marks 1, 2a and 2b will be inflatable orange cylinders.
	10.2 The starting and finishing marks will be a race committee boat and a buoy with orange flag, in compliance with Appendix A.
11	Start
	11.1 The starting line will be constituted by a pole with orange flag on the starting ship and a buoy with an orange flag.
	11.2 Rule 26 is changed as follows: 3 minutes before start signal: display of the class flag, together with an acoustic signal 2 minutes before start signal: display of flag "P", together with an acoustic signal 1 minute before start signal: pulling down of flag "P", together with an acoustic signal Start signal is the pulling down of the class flag, together with an acoustic signal
	11.3 Boats starting later than 3 minutes after their starting signal will be scored DNS without a hearing (change RRS A4).
12	Change of the Next Leg of the Course, in compliance with RRS 33
13	Shortening of the Course The course will not be shortened
14	Finish The finishing line will be constituted by a mast with orange flag on the race committee's boat and a buoy with an orange flag.
15	Penalty System, Protests and Requests for Redress Sailing will be with course umpires, as described in Appendix Q to these sailing instructions. Decisions taken by the protest committee are final according to RRS 70.5 (b).
16	Target Times and Time Limits
	16.1 Target time is 15 minutes. Failure to meet the target time will not be grounds for requests for redress. This changes rule RRS 62.1(a).
	16.2 Time limit for the first boat is 20 minutes.
	16.3 Boats failing to finish within 5 minutes after the first boat has sailed the course and finished will be scored „Did Not Finish" (DNF) without a hearing. This changes RRS 35, A4 und A5.
17	Scoring
	17.1 At least 2 races per team are required to be completed to constitute a regatta.

17.2	The scoring system is as follows: High Point System. Every team that starts and finishes, and that afterwards neither renounces from the race, nor receives a penalty or a redress, will receive the score 6 minus finishing position. Thus, the first will receive 5 points, the second 4, etc. A team that does not start, does not finish, has retired from the race or been disqualified,
17.3	A team's total score will be the sum of its single scores without discard. If the teams have differing numbers of races, the teams with fewer races will be allocated points corresponding with their overall average score.
17.4	With level scores, RRS A8.1 is initially applicable. If scores are still level, the respective competitors will be compared directly. If scores are still level, RRS A8.2 is applicable. This changes RRS A8.
18	Safety Regulation
18.1	Please refer to basic rule 1.2 of RRS.
18.2	A boat that retires from a race shall notify the race committee immediately.
19	Substitution of Crew and Equipment
19.1	Substitution of the crew will only be allowed in reasonable, exceptional cases and after approval of the jury.
19.2	Substitution of damaged or lost equipment may only be carried out by the repair service.
20	Crew change
20.1	Every team shall hold itself ready for change in sufficient time at the shuttle dock. Last point in time is the preceding start.
20.2	The change takes place after the finish, with rolled-up jib and standing mainsail. The shuttle boat will then berth.
20.3	After the change, the shuttle boat will stay next to the boat for about 2 minutes. During this time, the new crew will inspect the boat. Protests declared later than that are not
21	Advertising Advertising displayed on the boats by the competitors is limited to the flag at the stern and must comply with Appendix C.
22	Official Boats Official boats will be marked with white flags carrying letters as follows: Race Committee boats: "RC" Umpire boats: "JURY" Press boats: "Presse" Crew change: Flag Q

23	Electronic Devices A team shall neither make radio transmissions while racing nor receive radio information not available to all teams. Navigation aids are not permitted. Watches without navigation
24	Support Boats and Coach Boats During the race, support boats and coach boats shall keep a distance of at least 50m to all competitors and course marks and are urged not to cause any swell at all.
25	Technical Fault and Damage
	25.1 When a boat has a technical fault, it shall display flag E immediately after finishing the race in order to alert the Repair Service. The Repair Service will also be marked with flag E.
	25.2 In case of damage, a damage report according to Appendix D shall be filled in at the regatta office.

Appendices:

Appendix A: Course

Appendix B: Rules for Handling of the Boats

Appendix C: Advertising

Appendix D: Damage Report

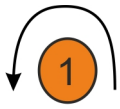
Appendix E: Technical Breakdowns

Appendix Q: Sailing with Umpires



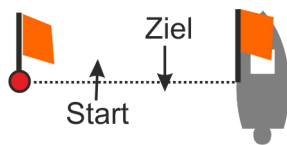
Appendix A:  
Revise Starting line = Finishing line

Course



Course mark 1 will be located upwind, seen from the starting line.  
There will be no course information.  
Course mark 1 shall be passed on portside.  
Course marks 2a and 2b are gates.

Sequence: Start – 1 – 2a/2b – 1 – Finish



Appendix B:  
Rules for the Handling of the Boats

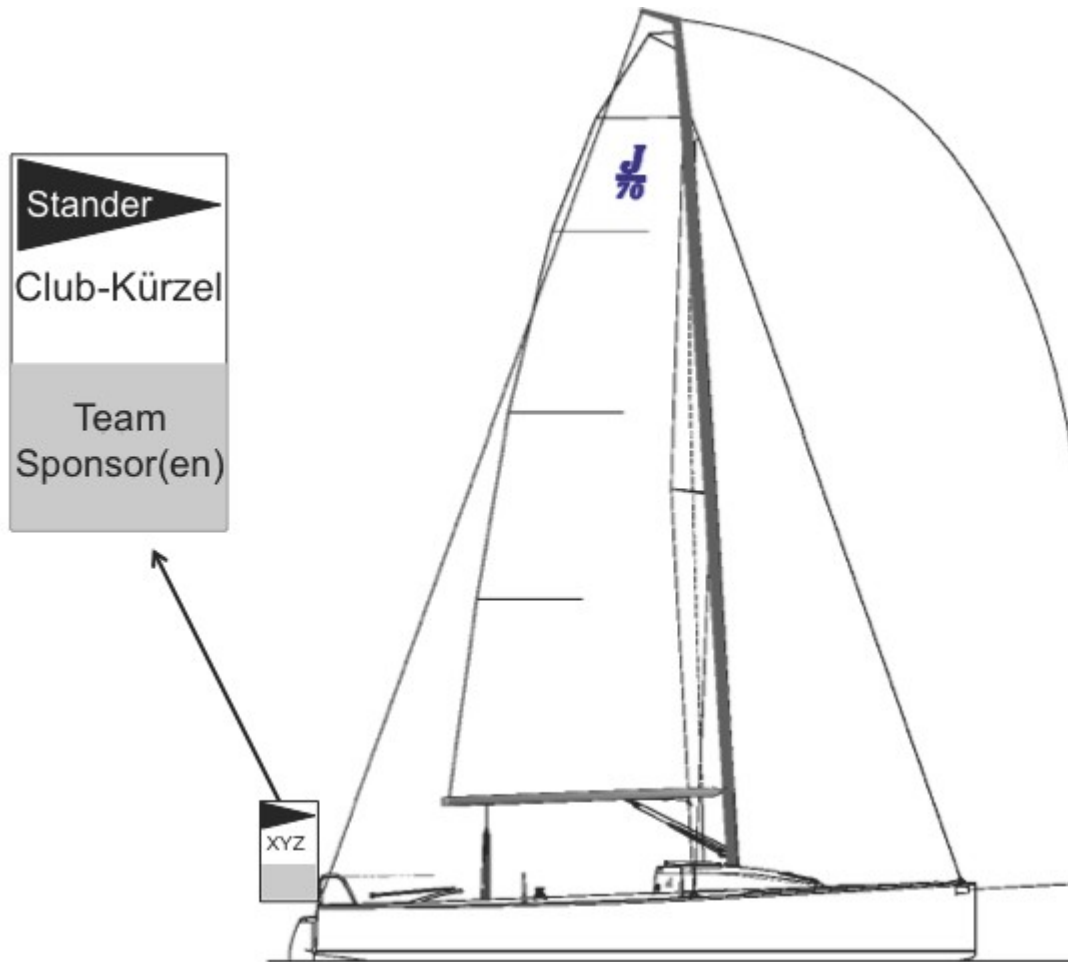
B 1	General Variations in the boats despite all measures for equalization will not be grounds for redress, this changes RRS 62.
B 2	Prohibited actions In order to prevent immediate damage or injuries, the following are prohibited (exceptions only in case of emergency or upon directions by race committee or umpire)
B2.1	Sailing in a manner that could cause serious damage or injury (also see RRS 14)
B2.2	Tying in, binding or hauling in of the jib.
B2.3	Any additions, omissions or alterations to the equipment supplied
B2.4	The use of the equipment for a purpose other than that intended.
B2.5	The replacement of any equipment. Exception: Damage. In this case, the replacement may be carried out only by the repair service.
B2.6	Moving equipment from its normal stowage position except when being used as scheduled.
B2.7	Marking of sails, perforation of sails or Appendix of further tell-tails to the sails.
B2.8	Marking of hull including cockpit.
B3	Passing on boats
B3.1	A boat may only be passed on to the following team in the presence of a race committee member, or afloat or at the changing area, as prearranged.
B3.2	Before passing the boat on to the next team, the original condition shall be restored by the crew.
B3.3	Deficiencies or damages detected by the crews shall be indicated to a race committee member immediately.
B4	Further Rules
B4.1	Crew Position (a) The crew shall be positioned within the lifelines at all times, except that a maximum of three crew members may have their feet and upper bodies in an outboard position, if they are positioned facing outboards and are sitting with their waistline within the lifelines.

		(b) When tacking or jibing, the crew is prohibited from pushing, pulling or clinging to the standing rigging in order to support the manoeuver.
	B4.2	<p>Bowsprit</p> <p>(a) The bowsprit must be completely pulled in, except if the gennaker is hoisted, being hoisted or being dowsed, and shall be hauled in at the first reasonable opportunity after dowsing the gennaker.</p> <p>(b) An extended gennaker pole is not considered as part of the boat or its equipment in the sense of</p> <ol style="list-style-type: none"> <li>1) the creation of an overlap,</li> <li>2) the acquisition of a right of way,</li> </ol> <p>as long as the gennaker has not been hoisted.</p>
	B4.3	<p>Shrouds and Forestay</p> <p>It is prohibited to alter shrouds and forestay at all times while afloat. The standing backstay may not be altered during the race.</p>

Appendix C:

Advertising

The illustrated pushpit flags will be produced exclusively by DSBL GmbH.



Appendix D:  
Damage Report

Note If you detect some damage when taking over a boat, please notify the race committee before starting the race.	
Boat number	
Skipper	
Date and time	
Damage description	
Reason for damage	
Signature skipper	

For race committee only

Damage protocol received (date and time)	
Has the reparation been executed satisfactorily?	Yes/No
Estimated repair cost in Euro	
Comments	

Attention:

In case of damage, every skipper is obliged to submit a complete damage report to the race committee whenever he detects damage or loss.

## Appendix E:

### Breakdowns when the boats are provided by the organizing authority

E1 When a boat suffers a breakdown in the racing area, she may request a score change by displaying a flag "Echo" at the first reasonable opportunity after the breakdown until it is acknowledged by the race committee or by an umpire. If possible, she shall continue racing.

E2 The protest committee shall decide requests for a score change in compliance with rules E3 and E4. It may take evidence in any way it considers appropriate and may communicate its decision orally.

E3 When the race committee decides that the boat's finishing position was made significantly worse and that the breakdown was through no fault of the crew, as well as that in the same circumstances a reasonably competent crew would not have been able to avoid the breakdown, it shall make as equitable a decision as possible. This may be not to score the race for this boat or, when the boat's finishing position was predictable at the time of the breakdown, to allocate her the points corresponding to this position. When the boat's position at the time of the breakdown is doubtful, the decision shall be taken to the boat's disadvantage.

E4 A breakdown caused by defective supplied equipment or a breach of a rule by an opponent shall not normally be determined to be the fault of the crew, whereas a breakdown caused by negligence, capsizing or faulty handling shall be. When there is any doubt about the crew's responsibility, the decision shall be taken in favor of the boat.

Adendum Q:

Upired fleet racing

	These sailing instructions change the definition Proper Course, and rules 20, 28.2, 44, 60, 61, 62, 63, 64.1, 65, 66, 70, 78.3 and B5.
Q1	<p style="text-align: center;">CHANGES TO RACING RULES</p> <p style="text-align: center;">Additional changes to rules are made in instructions Q2, Q3, Q4, and Q5.</p>
Q1.1	Changes to the Definitions and the Rules of Part 2 and Part 4
	<p>(a) Add to the definition Proper Course: 'A boat taking a penalty or manoeuvring to take a penalty is not sailing a proper course.'</p>
	<p>((b) When rule 20 applies, the following arm signals are required in addition to the hails:  (1) for 'Room to tack', repeatedly and clearly pointing to windward; and  (2) for 'You tack', repeatedly and clearly pointing at the other boat and waving the arm to windward. Instruction Q1.1(b) does not apply to boards.</p>
Q1.2	Changes to Rules Involving Protests, Requests for Redress, Penalties and Exoneration
	<p>(a) The first sentence of rule 44.1 is replaced with: 'A boat may take a One-Turn Penalty when she may have broken a rule of Part 2 (except rule 14 when she has caused damage or injury) or rule 31 or 42 or while racing.' or a rule described in Appendix B4.1 or B4.2 of these sailing instructions.</p>
	<p>(c) Rule 60.1 is replaced with 'A boat may protest another boat or request redress provided she complies with instructions Q2.1 and Q2.4.'</p>
	<p>(d) The third sentence of rule 61.1(a) and all of rule 61.1(a)(2) are deleted.</p>
	<p>(e) Rules 62.1(a) are deleted. In a race where this addendum applies, there shall be no scoring adjustments for redress given under any of these rules for a previous race.</p>
Q2	PROTESTS AND REQUESTS FOR REDRESS BY BOATS
Q2.1	While racing, a boat may protest another boat under a rule of Part 2 (except rule 14) or under rule 31 or 42 or of one of the rules B4.1 or B4.2 as described in Appendix B of these sailing instructions however, a boat may only protest under a rule of Part 2 for an incident in which she was involved. To do so she shall hail "Protest" and conspicuously display a red flag at the first reasonable opportunity for each. She shall remove the flag before, or at the first reasonable opportunity after a boat involved in the incident has taken a penalty voluntarily or after an umpire's decision. However, a

Q2.2	A boat that protests as provided in instruction Q2.1 is not entitled to a hearing. Instead, a boat involved in the incident may acknowledge breaking a rule by taking a One-Turn Penalty as described in rule 44.2. If the protested boat does not take a penalty voluntarily, an umpire will decide whether to penalize any boat and signal the decision as provided in instruction Q3.1.
Q2.3	A boat intending to (a) protest another boat under a rule other than instruction Q3.2 or Q4.2(a), or a rule listed in instruction Q2.1, (b) protest another boat under rule 14 if there was contact that caused damage or injury, or (c) request redress shall hail the race committee before or during the display of flag B. The same time limit applies to protests under instructions Q5.4 and Q5.5. The protest committee may extend the time limit if there is good reason to do so.
Q2.4	The race committee will promptly inform the protest committee about any protests or requests for redress made under instruction Q2.4..
Q3	UMPIRE SIGNALS AND IMPOSED PENALTIES
Q3.1	An umpire will signal a decision as follows: (a) A green and white flag with one long sound means 'No penalty.' (b) A red flag with one long sound means 'A penalty is imposed or remains outstanding.' The umpire will hail or signal to identify each such boat. (c) A black flag with one long sound means 'A boat is disqualified.' The umpire will hail or signal to identify the boat disqualified.
Q3.2	(a) A boat penalized under instruction Q3.1(b) shall take a One-Turn Penalty as described in rule 44.2. (b) A boat disqualified under instruction Q3.1(c) shall promptly leave the course area.
Q4	PENALTIES AND PROTESTS INITIATED BY AN UMPIRE; ROUNDING OR PASSING MARKS
Q4.1	When a boat (a) breaks rule 31 and does not take a penalty, (b) breaks rule 42, (c) has broken rules B4.1 or B4.2 of the appendices to these sailing instructions, (d) gains an advantage despite taking a penal (e) deliberately breaks a rule, (f) commits a breach of sportsmanship, or (g) fails to comply with instruction Q3.2 or to take a penalty when required to do so by an umpire, an umpire may penalize her without a protest by another boat. The umpire may impose one or more One-Turn Penalties to be taken as described in rule 44.2, each signalled in accordance with instruction Q3.1(b), or disqualify her under instruction Q3.1(c), or report the incident to the protest committee for further action. If a boat is penalized under instruction Q4.1(g) for not taking a penalty or taking a penalty incorrectly, the original penalty is cancelled.



Q4.2	<p>(a) A boat shall not round or pass a mark on the wrong side. If she does so, she may correct her error as provided in rule 28.2 only if she does so before she rounds or passes the next mark or finishes.</p> <p>(b) When a boat breaks instruction Q4.2(a) and fails to correct her error before rounding or passing the next mark or finishing, an umpire may disqualify her under instruction Q3.1(c).</p>
Q4.3	<p>An umpire who decides, based on his own observation or a report received from any source, that a boat may have broken a rule, other than instruction Q3.2 or Q4.2(a) or a rule listed in instruction Q2.1, may inform the protest committee for its action under rule 60.3. However, he will not inform the protest committee of an alleged breach of rule 14 unless there is damage or injury.</p>
Q5	<p>PROTESTS; REQUESTS FOR REDRESS OR REOPENING; APPEALS; OTHER PROCEEDINGS</p>
Q5.1	<p>No proceedings of any kind may be taken in relation to any action or non-action by an umpire.</p>
Q5.2	<p>A boat may not base an appeal on an alleged improper action, omission or decision of the umpires or the protest committee. In rule 66 the third sentence is changed to 'A party to the hearing may not ask for a reopening.'</p>
Q5.3	<p>(a) Protests and requests for redress need not be in writing.</p> <p>(b) The protest committee may take evidence and conduct the hearing in any way it considers appropriate and may communicate its decision orally.</p> <p>(c) If the protest committee decides that a breach of a rule has had no effect on the outcome of the race, it may impose a penalty of points or fraction of points or make another arrangement it decides is equitable, which may be to impose no penalty</p>
Q5.4	<p>The race committee will not protest a boat, except following a report under rule 43.1 (c) or 78.3.</p>
Q5.5	<p>The protest committee may protest a boat under rule 60.3. However, it will not protest a boat for breaking instruction Q3.2 or Q4.2(a), a rule listed in instruction Q2.1, or rule 14 unless there is damage or injury.</p>